



**Enhanced capabilities for Automation and the creation of imposition plans for half-web Perfect Bound bookwork.**

## General

The multiple sheet template is a new feature that will speed-up the creation of Automated Imposition Jobs as well as multi-web jobs containing half-web in Perfect Bound bookwork.

In DynaStrip, multiple sheets can now be saved to the Library. This will allow the import of complete jobs or parts of jobs and attach different pagination sequences to the sheets imported.

## New Pagination Sequence Definition Menu

**The Pagination Sequence Definition Menu has 3 new fields:**

- *Leave Pagination as is*
- *Increment using «First page» number*
- *Continue numbering from previous sequence*

**NOTE: THOSE 3 CHOICES ARE ONLY AVAILABLE IN CREEP ONLY. THOSE 3 CHOICES WILL BE GREYED OUT ON ALL OTHER BINDING ALGORITHMS.**

**THE INCREMENT AND CONTINUE NUMBERING WILL ONLY WORK ON PERFECT BOUND TYPE OF BOOKWORK.**

This means that DynaStrip will not do automatic pagination using the Copy Sheet method, but will use its increment capability to paginate.

## New Import Sheet Menu

When importing one template you will have the ability to choose between 3 choices:

**1.- Read from template.** This will leave the Pagination Sequence applied to a sheet unchanged. This is what you will use to import jobs that are already paginated. We will be using this choice to automate numerous job simultaneously with DynaStrip Automation.

**2.- Link all signatures to Pagination Sequence.** This will apply the same pagination sequence to all templates to be imported.

**3.- Link signatures to different sequences.** This is used to apply a different pagination sequence for each template to be imported.

## Case Study #1 (Automation)

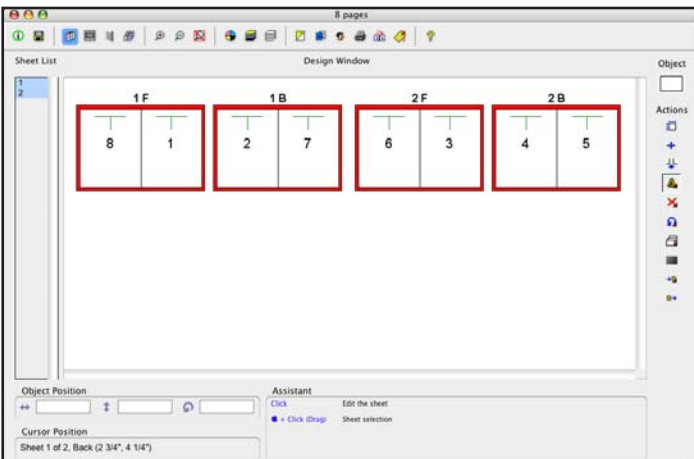
### How to run DynaStrip Automation with different jobs simultaneously.

This method will ease the process of automating the output of up to 200 jobs simultaneously. In this example we will work with three different jobs. (One 8-page, one 16-page and one 32-page job).

#### Step #1

Create each job on one or more workstations.

- Job is done the usual way either with Dynamo or Standard Method.
- Display all the sheets by selecting the first sheet, then press shift and click on the last sheet (up to 25 sheets can be displayed simultaneously).
- Press the Command/Control or Apple key and drag select around the sheets to select all the sheets to be saved.



- Select the Saved to Library button to save those sheets into a single template. Create a new folder named Today's Jobs, then name the newly

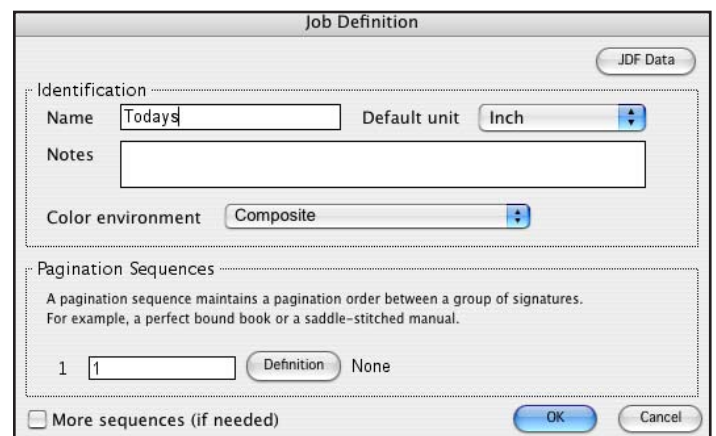
created template as the job name or any other name that you wish to identify our 8-page job.

P.S. Note that in this first job, pages are attached to document list No. 1. In Automation, a Document List is linked to its own hot folder.

Create all other jobs using the same technique as the 8-page one, and make sure you choose Document List 2, then 3 etc. Up to 200 document lists could be used.

#### Step #2

- Create a master DynaStrip job using the Standard Method. This main job will include all jobs that are scheduled to output simultaneously.
- You do not have to enter any pagination sequence definition unless creep is to be applied.



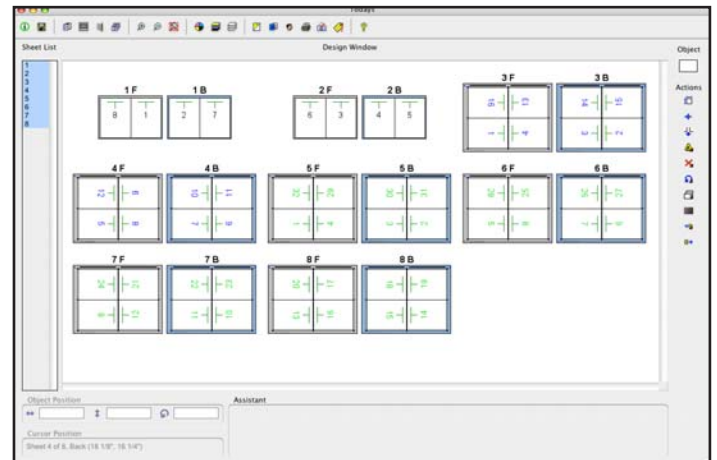
- Save the job.
- Select the Load from Library (Object Sheet is already selected).

- Add the 3 jobs saved as Template (dsh), 8, 16 and 32-page.

- Click OK

- In this case we will leave the default *Read from template* as we do not wish to change the pagination sequence because our jobs are already paginated and do not require creep. (If creep was to be applied to one or more jobs, we would have created one or more pagination sequences with *creep values* and use the *Link signatures to different sequences*.

- Click OK



- The 3 jobs are now part of a main DynaStrip job and are ready to be automated using the usual procedure for Automation (define output, define hot folder, naming convention and run).

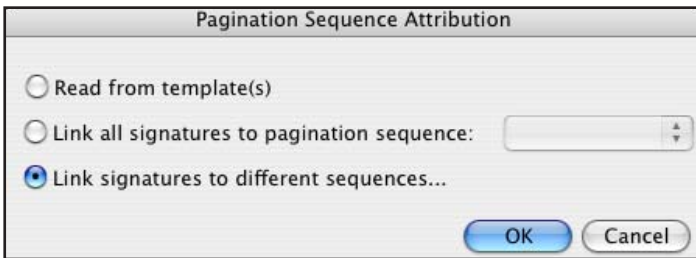
**The same scenario with creep, only on the 32-page will work like this:**

- Same as Step #2, except that we will create a new pagination sequence. As only one job has creep and that all the jobs are automatically

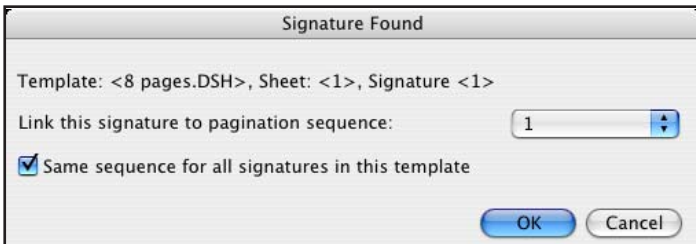


linked to Pagination Sequence #1, we will create Pagination Sequence #2 with *Creep only* and a creep value.

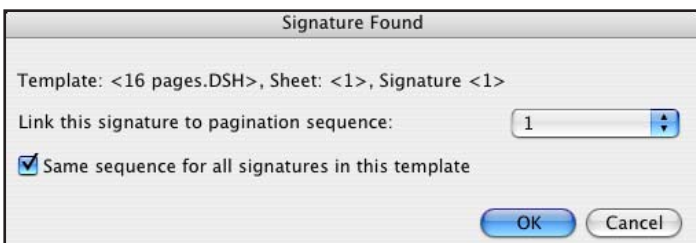
- Then after clicking OK, choose *Link signatures to different sequences*.



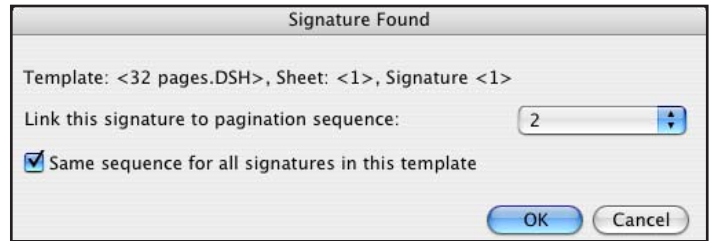
- Then leave the 8-page to Pagination Sequence #1 and select the checkbox *Same sequence for all signatures in this template*.



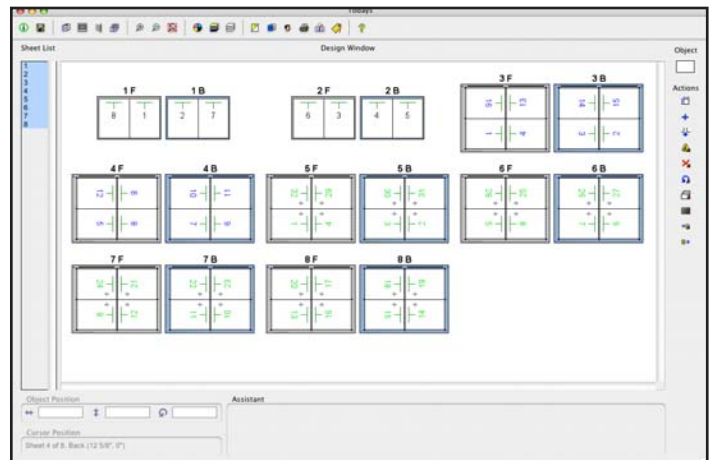
- Leave the 16-page to Pagination Sequence #1 and select the checkbox *Same sequence for all signatures in this template*.



- For the 32-page, link this signature to Pagination Sequence #2 and select the checkbox *Same sequence for all signatures in this template*.



- The 32-page job has been linked to Pagination Sequence #2 and creep has been applied to this job only.



## Case Study #2

### Perfect Bound job with half web structure

In this example, we will import a 2.5 web and a 1.5 web that will total 32 pages and paginate the job automatically using the same technique as Case Study #1.

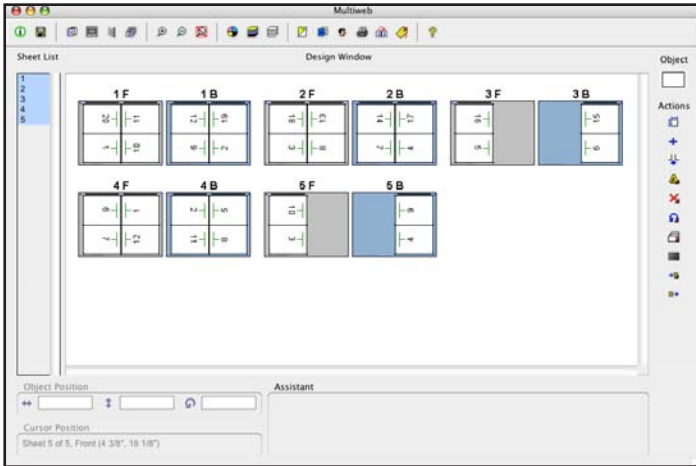
- Create a new job using the Standard Method.
- In pagination 1, select *Creep Only* and *Leave Pagination as is*.

- In pagination 2, select *Creep Only* and select *Continue numbering from previous sequence*. The next template will continue the numbering from Pagination #1 (20 pages) and will start at page 21.

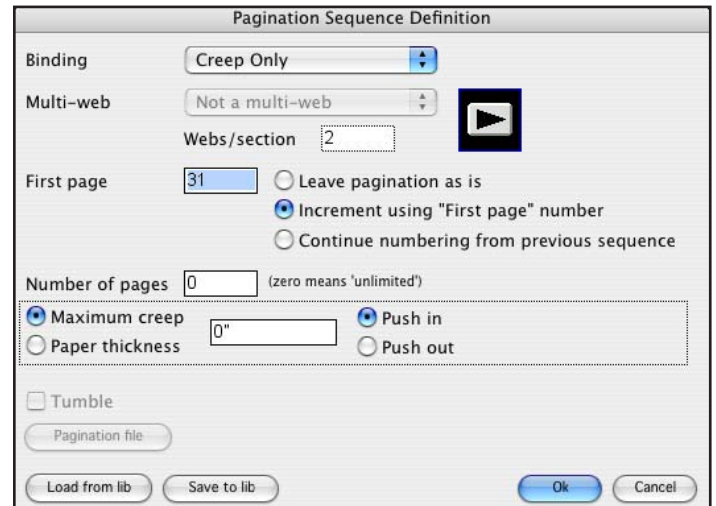
- After importing the 2.5 web and the 1.5 web and clicking OK, the Pagination Sequence Attribution Menu will appear. We will select Link signature to different sequences to apply different sequences to the group of signatures.

- The first signature (2.5 web), will be linked to pagination sequence #1 and the *Same sequence for all signatures in this template* checkbox will be selected to link all parts of that sheet template to the same pagination sequence.

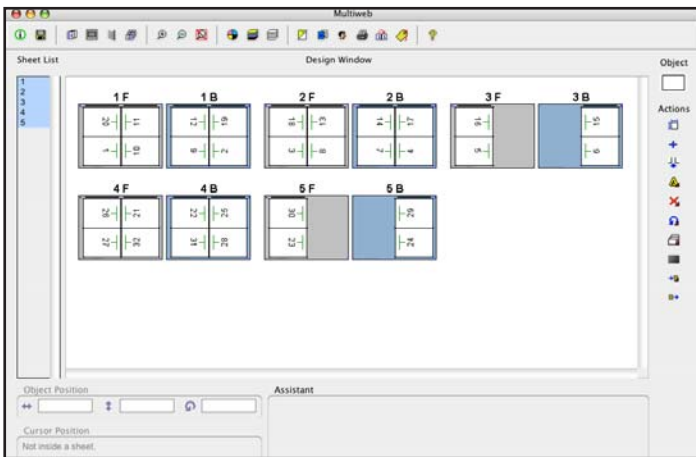
- For the 1.5 web signature, we will link this template to Pagination sequence #2 and check the *Same sequence for all signatures in this template*.



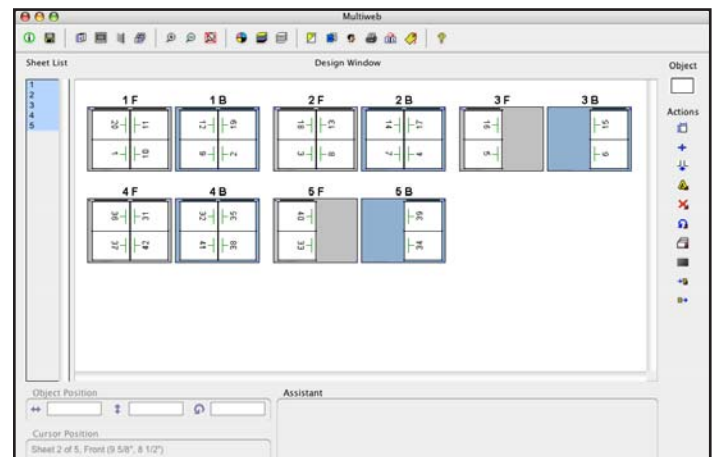
- Edit Pagination Sequence No. 2 and select Increment using *First page* number and enter 31 in the First Page field.



- This is the job before applying the Pagination sequence.
- After applying the sequence, the job is now properly paginated.



- Re-apply Pagination Sequences
- Check the Link Signatures to different sequences. Notice that the 1.5 web now starts at page 31.



- It is also possible to start the 1.5 web by incrementing the section at any time by editing pagination sequence No. 2 to start incrementing a new section.